

Grenfell Place

Maidenhead • • SL6 1HJ

PCM: £1,800 PCM



coopers
est 1986

Grenfell Place

Maidenhead • • SL6 1HJ

A three bedroom end of terrace home offered unfurnished and ideally situated within walking distance to Maidenheads' Elizabeth Line.

Three Bedroom House

Unfurnished

Two Reception Rooms

Recently Renovated

Well Sized Rooms

Maidenhead Town Centre

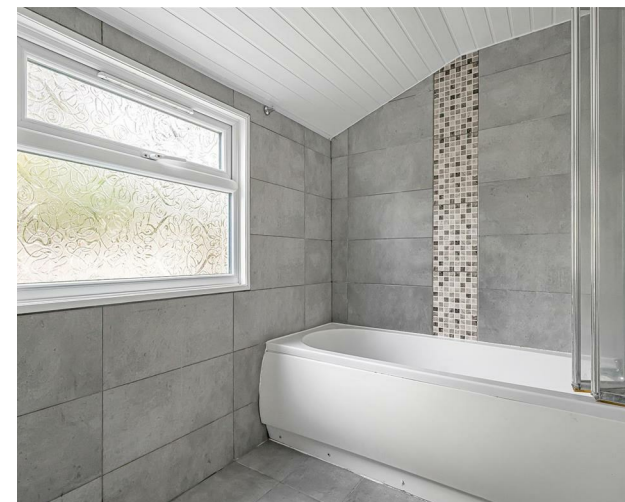
Side Access

Great School Catchments

Walking Distance to Maidenhead Elizabeth Line

Easy access to Heathrow Airport, M4, A404

These particulars are intended as a guide and must not be relied upon as statements of fact. Your attention is drawn to the Important Notice on the last page.

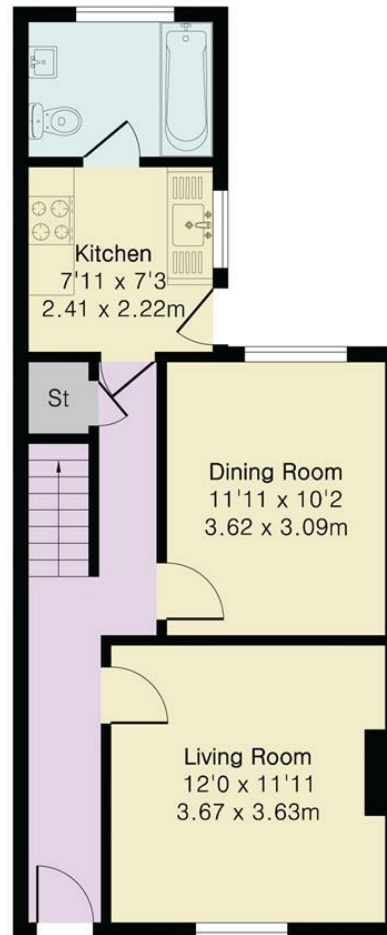




Grenfell Place, Maidenhead, SL6

Approximate Area = 940 sq ft / 87.3 sq m

For Identification only - Not to scale



Ground Floor



First Floor

coopers
est 1986

42 Queen Street, Maidenhead,
, SL6 1HZ
maidenhead@coopersresidential.co.uk

CoopersResidential.co.uk

Energy Efficiency Rating		
Very energy efficient - lower running costs	Current	Potential
A (92-100)		
B (81-91)		
C (69-80)		
D (55-68)		
E (39-54)		
F (21-38)		
G (1-20)		
Not energy efficient - higher running costs		
England & Wales		
EU Directive 2002/91/EC		

Important Notice: These particulars, whilst believed to be accurate are set out as a general outline only for guidance and do not constitute any part of an offer or contract. Intending purchasers should not rely on them as statements or representation of fact, but must satisfy themselves by inspection or otherwise has the authority to make or give any representation or warranty in respect of the property.